

 **abp**
trusted worldwide



PRODUCT
PORTFOLIO



ABP IS THE NO 1 TRUSTED PARTNER



We offer a wide range of solutions for diverse applications and industries, combined with short delivery times and high availability that ensure planning reliability and smooth processes. Our goal is clear: we improve our customers' daily operations by solving their challenges efficiently and sustainably.

abp's core competence lies in shaft couplings for a wide variety of applications. Magnetic encoder measurement systems, measuring wheels and encoder accessories, as well as precision gears and gear components, perfectly complement our portfolio. The result is a technically coordinated system solution from a single source.

In an increasingly digital world, we focus on personal contact and genuine understanding. We listen carefully, analyze requirements and deliver customized solutions that match to exact your needs.

At abp, customer service is personal and dependable. A dedicated contact person guides the entire process – from inquiry to delivery – ensuring transparency, fast response times and continuous support. With us, customer service is still personal!

**This is how we create trust with our customers.
Every day.
Everywhere.**

OUR VALUES

SAFE

As a company with personality, abp stands for safety, stability and reliability. We are and remain a reliable supplier with consistently high quality and fast delivery times.

SOLUTION ORIENTED

Thanks to the combination of our broad product range, the diverse customization options and 25 years of know-how, we at abp offer fast, economical, reliable solutions - tailored to your requirements.

DYNAMIC

At abp, we are known for our fast delivery and response times and our diverse portfolio of solutions. This means that our customers can be sure that they will receive the optimum solution in a short space of time - enabling them to complete their project

LEADING

At abp, we pave the way for new technological developments, optimized processes and new solutions for our customers - by providing high-performance support as a contract manufacturer for a wide range of industries.

EMPHATIC

abp stands for customer proximity, fast and uncomplicated order processing, competent solution consulting and a powerful team.

Our secret recipe?
We really listen to you!

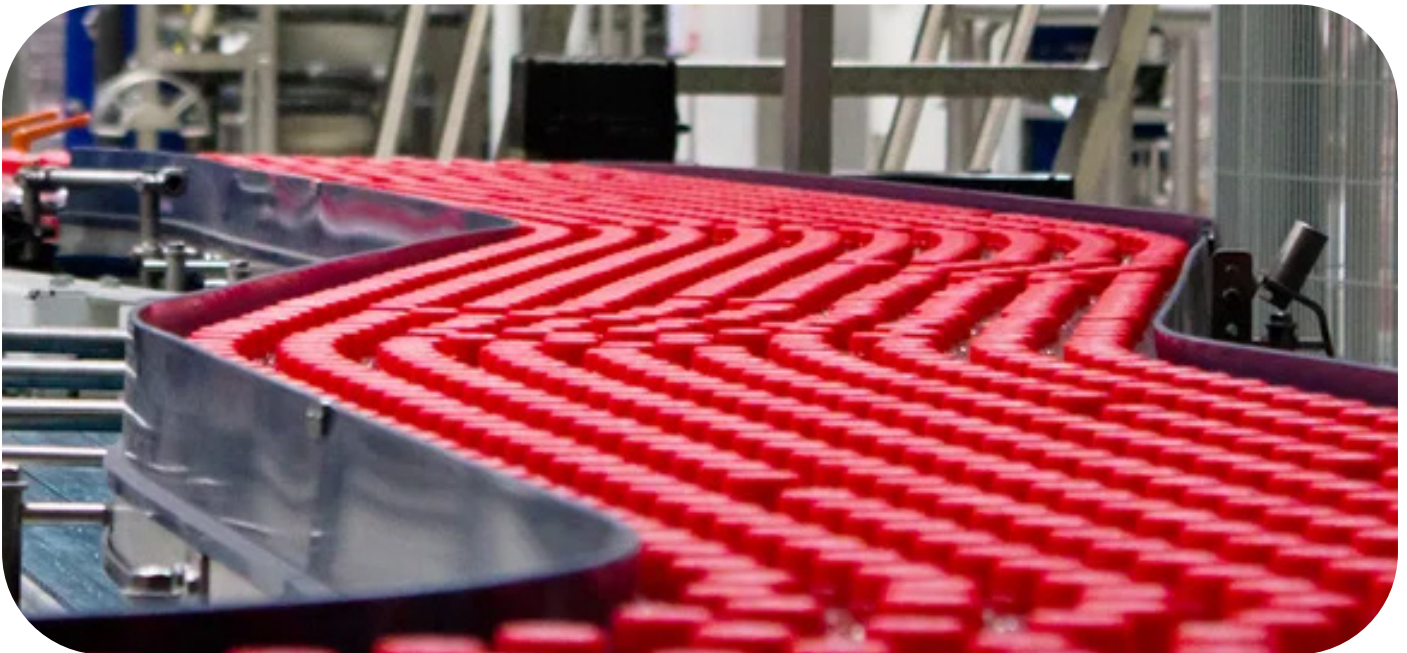
INDUSTRIES

FOOD INDUSTRY

Our portfolio includes precise angular gearboxes, reliable shaft couplings made of corrosion-resistant stainless steel and FDA-compliant plastic elements for the food industry. This is complemented by spring arms with measuring wheels for precise speed measurement and positioning. Our customised drive solutions meet the highest hygiene and safety requirements and ensure robust, durable and trouble-free operation in conveyor systems, packaging machines and mixing systems.

STORAGE AND CONVEYOR TECHNOLOGY

High-precision gearboxes and robust couplings ensure smooth material flow and efficient warehouse processes. Energy-efficient, durable solutions from abp reduce operating costs and support the automation of modern logistics centres. Thanks to a wide range of material options, our couplings are ideal for conveyor, sorting and picking systems and ensure reliable, low-maintenance operation. With our innovative measuring system including encoder, we offer a compact and cost-optimised solution.



RENEWABLE ENERGIES

High-quality metal bellows couplings from abp ensure precise torque transmission in wind turbines during rotor blade alignment and guarantee reliable operation with minimal maintenance. In biogas plants, high-precision, backlash-free angular gearboxes enable precise valve control for minimal gas loss and an optimal mixing ratio. Good connections – with safety!

POSITIONING SYSTEMS

Our precise and robust components for industrial positioning systems are used in machine tools, automation and measurement technology. Innovative gear and coupling solutions enable dynamic, high-precision motion control and can be flexibly adapted to different requirements.



MACHINERY AND PLANT ENGINEERING

Innovative technologies from abp optimise energy consumption while delivering maximum performance. Torsionally rigid, flexurally elastic couplings compensate for shaft misalignments, tolerances, bearing wear and temperature fluctuations and increase productivity and operational reliability with tailor-made solutions.

DRIVES AND ROBOTICS

abp specialises in high-precision and reliable drive solutions for robotics. Torsionally rigid, flexurally elastic couplings and gear components meet the highest requirements in gripping systems and, with custom-made solutions, enable precise positioning and alignment, for example in camera systems for sewer inspection equipment.

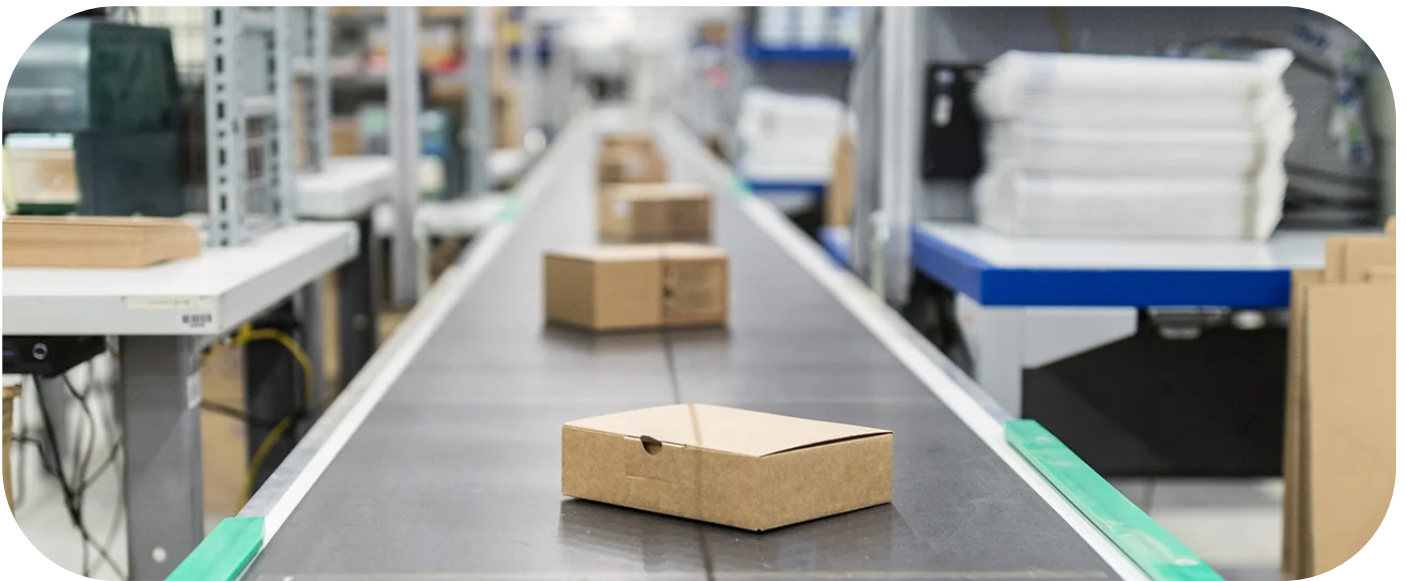
AUTOMATION

Precise and fast movements are crucial in automation. Reliable shaft couplings from abp compensate for misalignments and transmit movements accurately and consistently. Durable, energy-efficient and torsion-resistant couplings optimise production processes, support automation from manufacturing to logistics, and ensure smooth operation with minimal downtime, even in highly dynamic and sensitive applications.

INDUSTRIES

LASER TECHNOLOGY

In optronics and electronics, maximum precision and reliability are crucial. Precise gear components and backlash-free, torsionally rigid couplings from abp enable exact positioning and angle-synchronous transmission in industrial cameras, digital microscopes and laser projections – for precise adjustment, reproducible processes and reliable results.



PACKAGING INDUSTRY

The packaging industry places the highest demands on precision and efficiency. abp Antriebstechnik offers innovative coupling and gear solutions for packaging machines that support automation and flexibility, enable higher speeds and accuracy, and reduce energy consumption and downtime.

The portfolio is complemented by spring arms with measuring wheels for precise speed measurement and positioning.

Our innovative measuring system with integrated encoder offers a user-friendly and compact complete solution.

3D-PRINTING

3D printing places the highest demands on precision and reliability. High-performance couplings from abp ensure precise motion transmission in modern printing systems. Specially developed spiral and bellows couplings impress with their high precision, effective vibration damping and compensation of axial, radial and angular misalignments – for reliable solutions from prototype construction to series production.

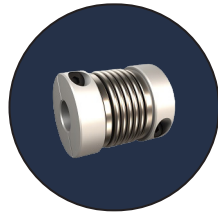
COUPLINGS

At abp, we focus on torsionally rigid, flexurally elastic shaft couplings as connecting elements between motors and transducers. Our shaft couplings transmit torque without backlash and at synchronised angles.

Shaft couplings from abp – that means the optimum balance between torsional stiffness and restoring forces. The resulting minimal load on the shaft bearings significantly extends the service life of systems and machines.

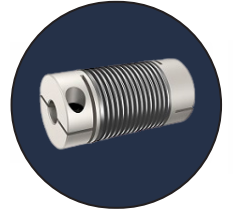
BELLOWS COUPLINGS

Screw or clamp version
Torque: 0,15 Nm to 10 Nm
Also in stainless steel A4 1.4404



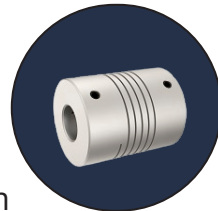
NICKEL BELLOWS COUPLINGS

Screw or clamp version
Torque: 13 Ncm to 200 Ncm



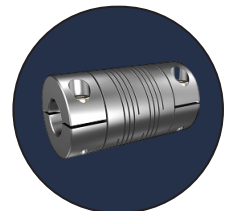
HELIX COUPLINGS

Screw or clamp version
Torque : 2 Ncm to 200 Ncm
Also in stainless steel A4 1.4404



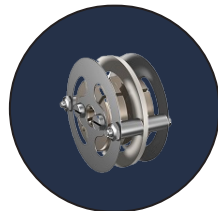
HEAVY DUTY HELIX COUPLINGS

Screw or clamp version
Torque : 0,4 Nm to 22 Nm
Also in stainless steel A4 1.4404



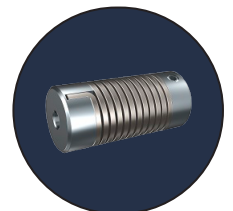
SPRING DISC COUPLINGS

Screw or clamp version
Torque: 40 Ncm to 400 Ncm



SPRING COUPLINGS

Screw version
Torque: 15 Ncm to 150 Ncm



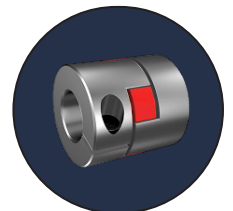
DOUBLE LOOP COUPLINGS

Screw version
Torque : 0,5 Nm to 5 Nm
available in stainless steel A4 1.4404
or FDA compliant components



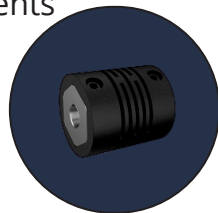
JAW COUPLINGS

Screw or clamp version
Torque : 8 Nm to 25 Nm
Also in stainless steel A4 1.4404



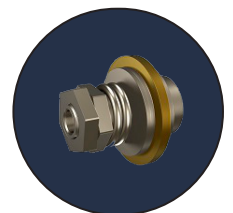
CROSS SLOTTED COUPLINGS

Screw or clamp version
Torque : 20 Ncm to 80 Ncm
Also in stainless steel A4 1.4404



FRICTION COUPLINGS

Screw or clamp version
Torque: 30 Ncm to 120 Ncm



MEASURING WHEELS & ENCODER ACCESSORIES

ENCODER MEASURING WHEELS

At abp, we manufacture measuring wheels made of aluminium as encoder accessories. You can obtain various sizes tailored precisely to your application – from 200 to 500 mm (6 to 12 inches). Custom diameters/ widths are available upon request. Whether cross-knurled, smooth, studded, ribbed, with FDA-compliant coating or with O-ring – we have the right surface for your requirements. This ensures minimum wear under high mechanical loads and optimal traction on your material surface. At abp, you will find the optimum measuring wheels for each of your applications.

Our measuring wheels are made in Germany – high quality and precision speak for themselves and impress with their excellent running characteristics and maximum measuring accuracy.



ENCODER ACCESSORIES

We offer a wide range of easy-to-install encoder accessories. Whether you need compatible accessories for incremental, absolute encoders or, for example, draw-wire encoders. From rotary encoder holders, spring arms, mounting brackets, reduction sleeves and mounting eccentrics to rotary encoder mounting kits and economical sets with matching measuring wheels, we offer high-precision solutions tailored to your applications.

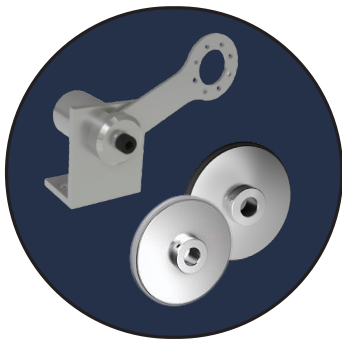




SPRING ARM DAAF 60120 & DAAF 60120 36

Highly precise and reliable measurement results with increased spring travel. With interference-free cable routing and flexible modular design, the rotary encoder can be mounted over 360 degrees and thus optimally aligned on both sides.

The spring load is individually adjustable, allowing installation from below or above the measuring section. The contact pressure is also infinitely adjustable and is clearly displayed on a laser-engraved scale. The recommended contact pressure is preset to 15 Nm



SPRING ARM DAAF 3666 26

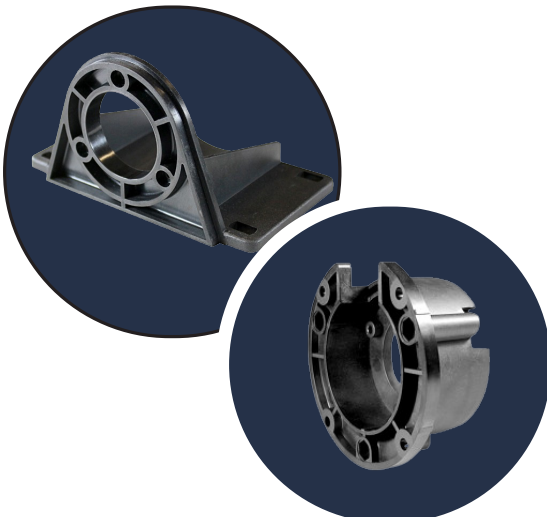
The spring arm is offered as a set with our MRAO or MSAP measuring wheels and is a cost-effective solution for simple and functional measurement of linear movements. The contact pressure can be adjusted using an adjustment screw and the arm can be mounted flexibly.

This small spring arm is equipped with an 8-hole pattern and is designed for compatible 36 encoders.



MOUNTING BRACKET SPRING LOADED DHAF 8580

Suitable for measuring wheels with a circumference between 300 mm and 500 mm. Perfect precise fit thanks to 12 mounting holes. (Special holes are possible). The constant contact pressure and carefully calibrated suspension compensate for any unevenness on the object being measured.



MOUNTING BRACKET & MOUNTING BELL

Made of glass fibre reinforced plastic Fortron 1140 L4 and compatible with all encoders with synchronous flange. Thermally (-40°C/+150°C) and electrically insulating. We offer a complete encoder mounting kit DMSA including matching couplings for these items.

ECODER MEASURING SYSTEM

The abp measuring system is the simple and fast solution when it comes to pulse synchronisation, repeatable position detection and movement measurement, as well as the automation of transport and handling processes.

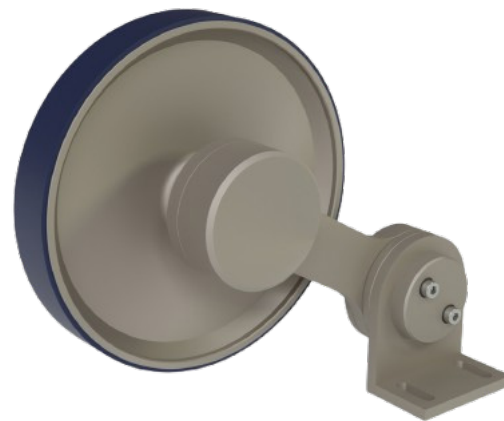
Our system provides you with an extremely space-saving and robust complete solution including an absolute encoder and an application-specific measuring wheel.

- * Absolute position encoder
- * No calibration required
- * Robust against external stray fields
- * Typical accuracy $\pm 0.2^\circ$

Robust, precise and insensitive – THE innovation for magnetic encoders

Applications:

- * Food industry
- * Warehousing and conveyor technology
- * Mechanical and plant engineering
- * Positioning systems
- * Drives and robotics
- * Automation
- * Laser technology
- * Packaging industry



Übersicht / overview		min	typ	max
Versorgungsspannung/ supply voltage	V	3,1	3,3	3,6
Stromverbrauch/ current consumption	mA	-	60	-
Auflösung ABI Schnittstelle/ resolution ABI interface	bit	8	12	14
Auflösung singleturn SPI Schnittstelle/ resolution singleturn SPI interface	bit	-	16	-
Auflösung multiturn SPI Schnittstelle/ resolution multiturn SPI interface	bit	-	16	32
Genauigkeit bei 1'000 rpm/ accuracy @ 1'000 rpm	degree	-	+0,2	-
Maximalgeschwindigkeit Messrad/ maximum speed wheel	rpm	Je nach Belag/depends on coating		
Wiederholbarkeit/ repeatability	degree	-	0,15	-
Exzentrizität/ eccentricity	mm	-	-	0,5
Streufeld Immunität/ stray field immunity	mT	10	-	-
Betriebstemperatur/ operating temperature	°C	-10	-	+60
Schnittstelle/ interface	SPI			
Federarm / spring arm				
Werkstoff / material	Aluminium, eloxiert / aluminium, anodised			
Gewicht Federarm/ weight spring arm	g	380		

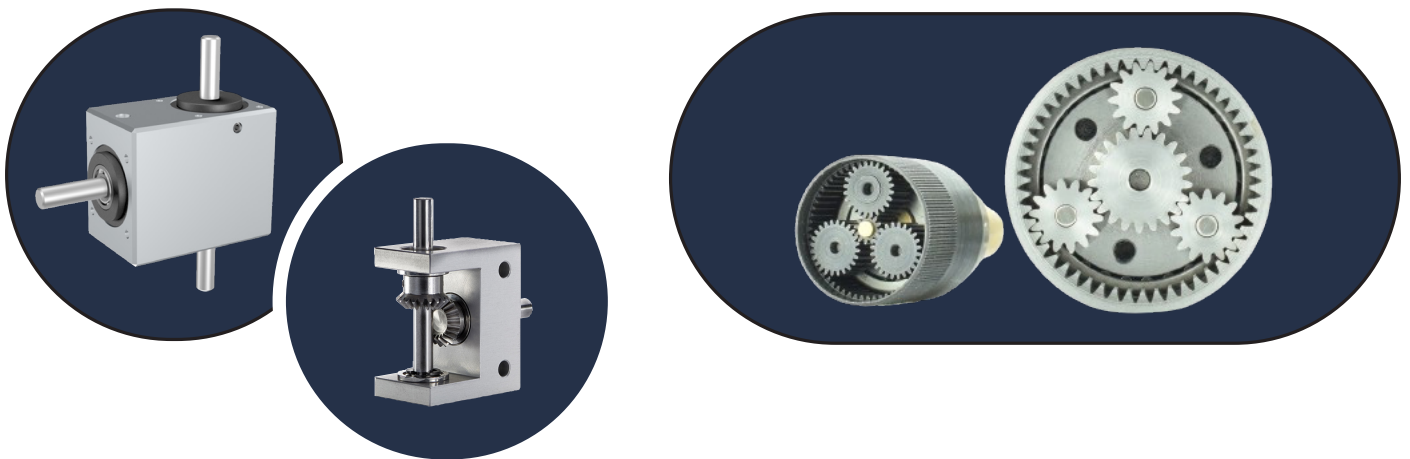
The abp MISX measuring system is sold as a complete measuring system together with a measuring wheel with a circumference of 200 mm/500 mm and a customised covering – your cost-optimised and reliable linear measurement for many possible applications.

GEARING PARTS & GEARBOXES

PRECISION MECHANICAL GEARBOXES

Our gearboxes manufactured from first-class materials combine efficiency, precision and a long service life in a compact design. With a torque range from 35Ncm to 250Ncm, they are ideal for applications in medical technology, robotics and many other demanding areas.

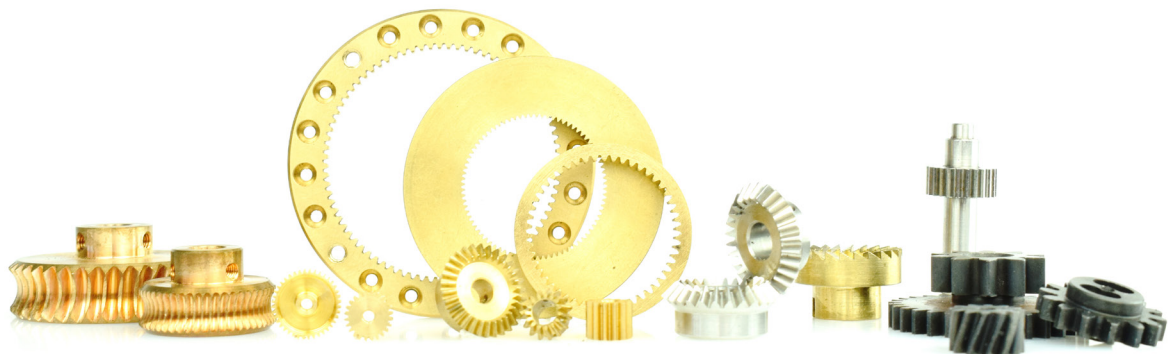
Whether you need prototypes, small series production or tailor-made special solutions, we are at your side as your partner – for perfect design and individual implementation.



GEARING PARTS

Bevel gears, worms, worm gears, spur gears and ring gears are available in sizes ranging from module 0.2 mm to module 2 mm. Special designs in many different materials are possible.

Can't find what you're looking for? Thanks to our in-house production, we can deliver quickly and reliably, even for small quantities. Please contact us, we will be happy to advise you and find the ideal solution for your application.




trusted worldwide



abp ANTRIEBSTECHNIK combines high and complex requirements with
precise manufacturing.
That is why our precision parts are indispensable components
in the field of drive technology.
trusted worldwide

abp ANTRIEBSTECHNIK GMBH

Leopoldstraße 1
78112 St. Georgen
Germany
Tel. +49(0)7724 58008-0
Fax +49(0)7724 58008-01
E-Mail: info@abp-antrieb.de
Internet: www.abp-antrieb.de